

THE LEARNING \_\_\_\_\_  
HEALTHCARE PROJECT

# REALISING THE POTENTIAL OF LEARNING HEALTH SYSTEMS

A Framework for thinking about Learning Health Systems  
The Learning Health System in the Osnabrück / Emland Region (ROSE)

Dr Tom Foley | Newcastle University



# Overview

- Definitions
- Exemplars
- A framework
- Discussion



# A HEALTH SYSTEM THAT LEARNS FROM EVERY PATIENT WHO IS TREATED



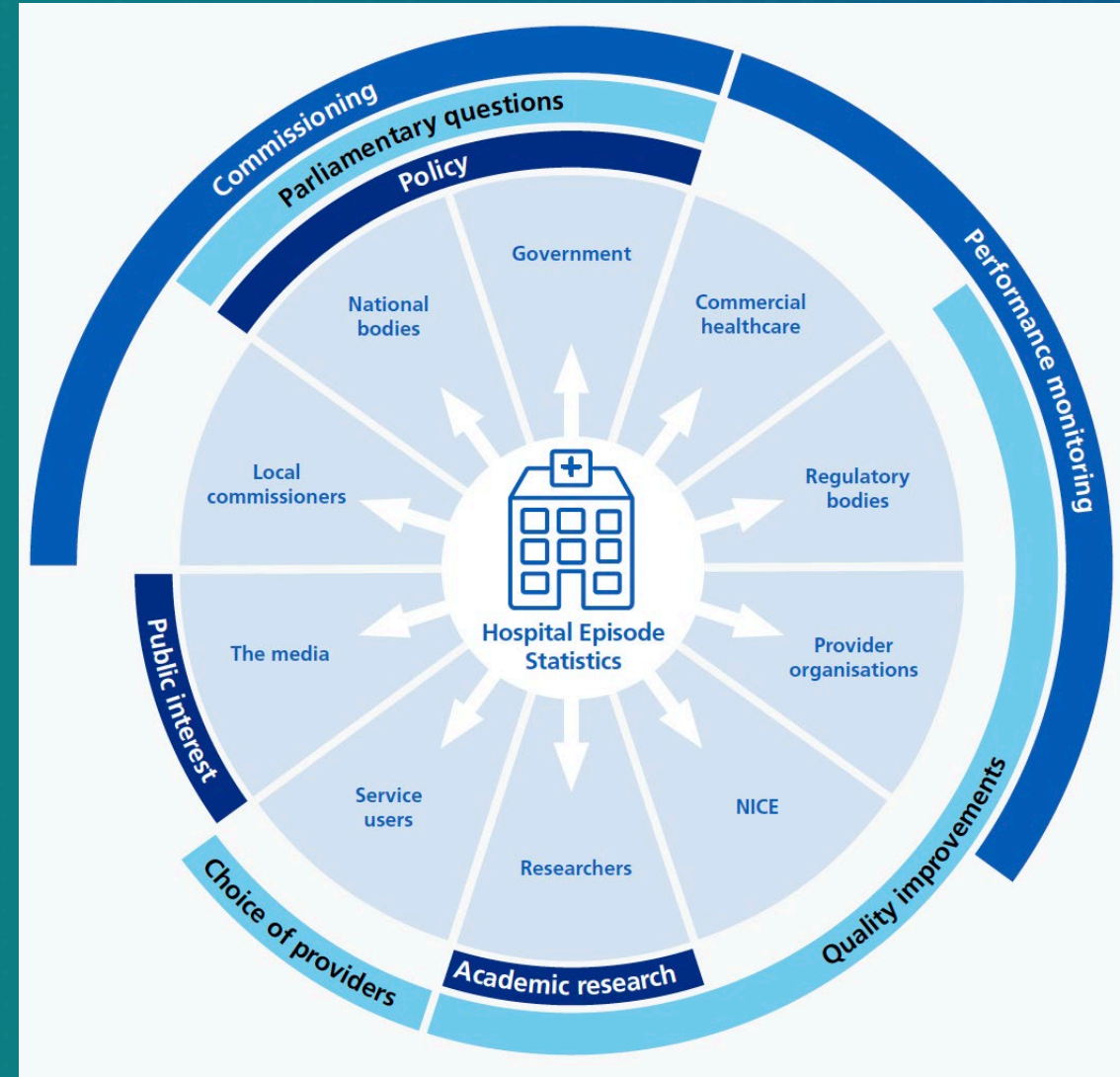
“in which **science, informatics, incentives, and culture are aligned for continuous improvement** and innovation, with best practices seamlessly embedded in the delivery process and new knowledge captured as an integral by-product of the delivery experience.”

US Institute of Medicine [National Academy of Medicine]



# A National Exemplar

- NHS Digital
- Running since 1989
- Every patient, every interaction, longitudinal
- Administrative, process, some outcomes
- Standards
- Data Services Platform
- Access, dissemination, reports, dashboards, audits, DigiTrials
- Scope for greater use



# Other Exemplars

- Connected Health Cities (x20)
- Local Health & Care Record Exemplars (x7)
- HDRUK Better Care (x8)
- Cystic Fibrosis LHS
- Asthma LHS
- Child Health Partnership LHS
- Radiotherapy LHS
- Opioid Prescribing LHS
- Antibiotic Resistance LHS
- COPD LHS
- Stroke LHS
- Palliative Care LHS
- LHS for Vulnerable Families
- Alcohol Related Illness LHS
- Transform

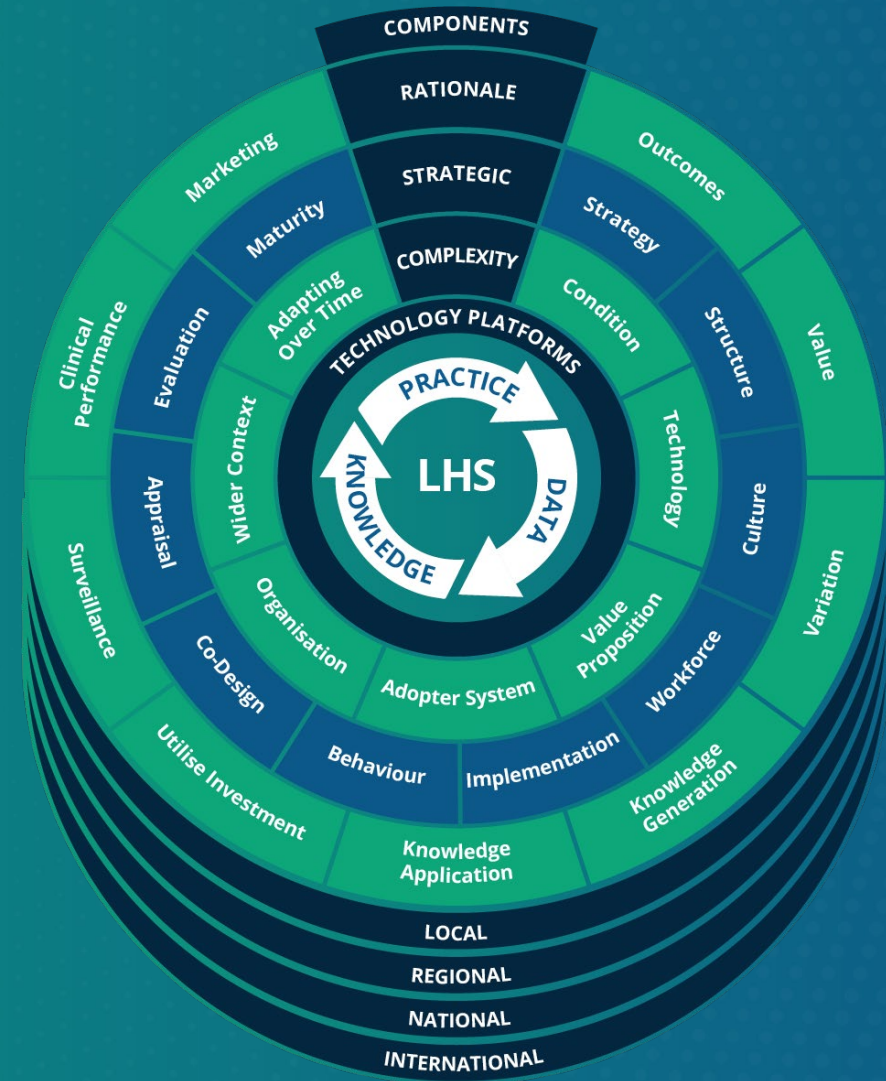


# HOW TO MAKE SENSE OF A LEARNING HEALTH SYSTEM (GesundheitsCampus Osnabrück)



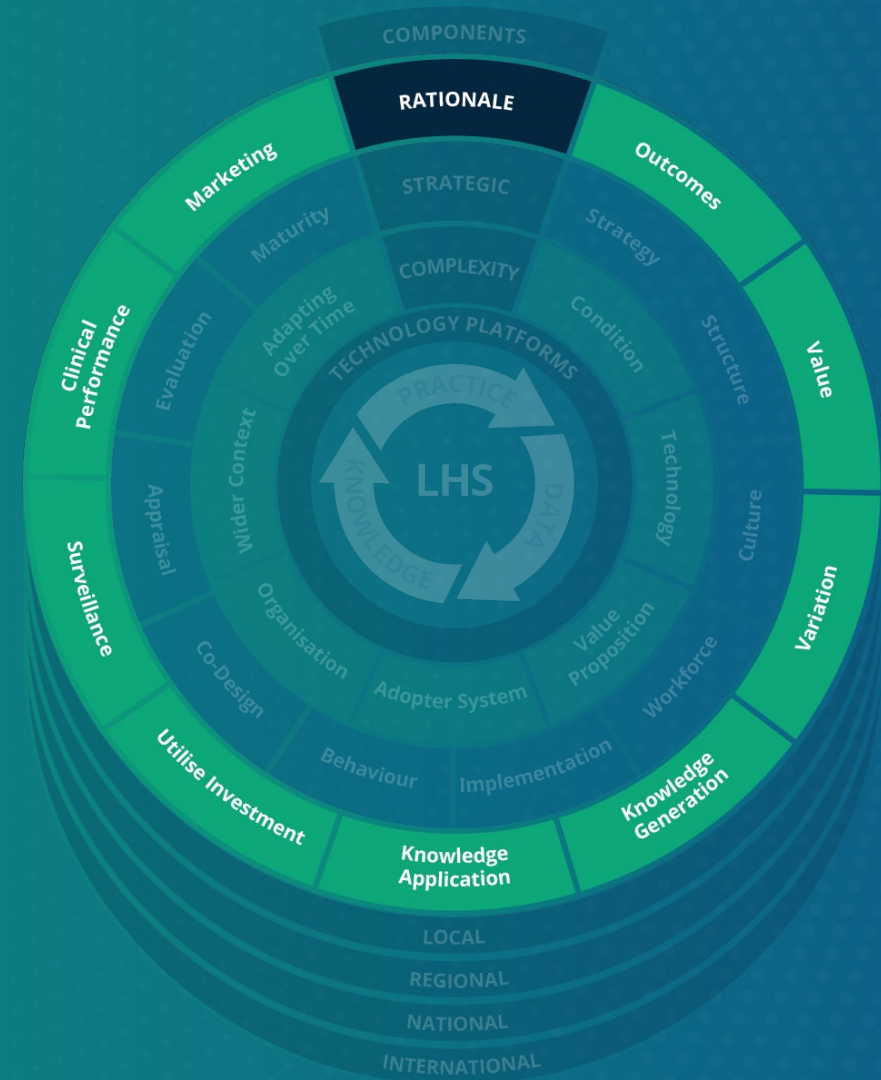
# FOUR QUESTIONS

1. Why?
2. What strategic approaches to change?
3. What complexity?
4. What technical building blocks?

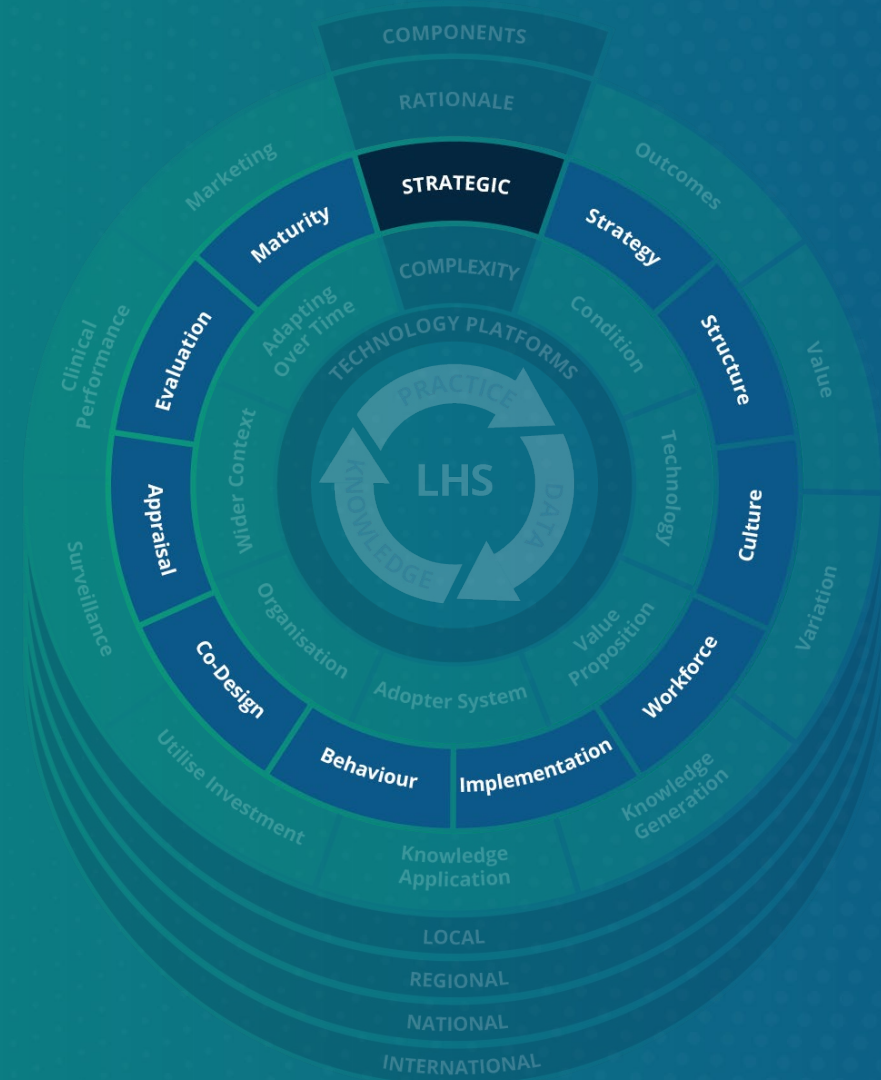




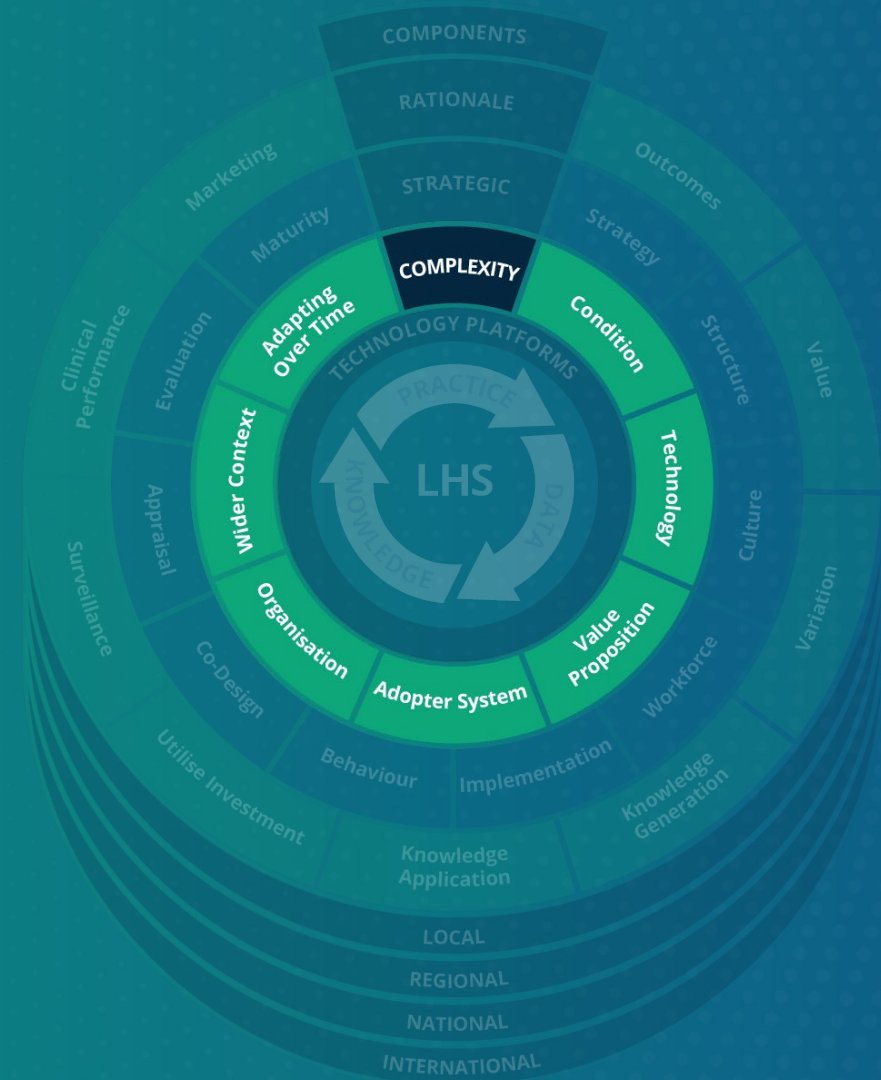
# WHY ARE YOU DOING IT?



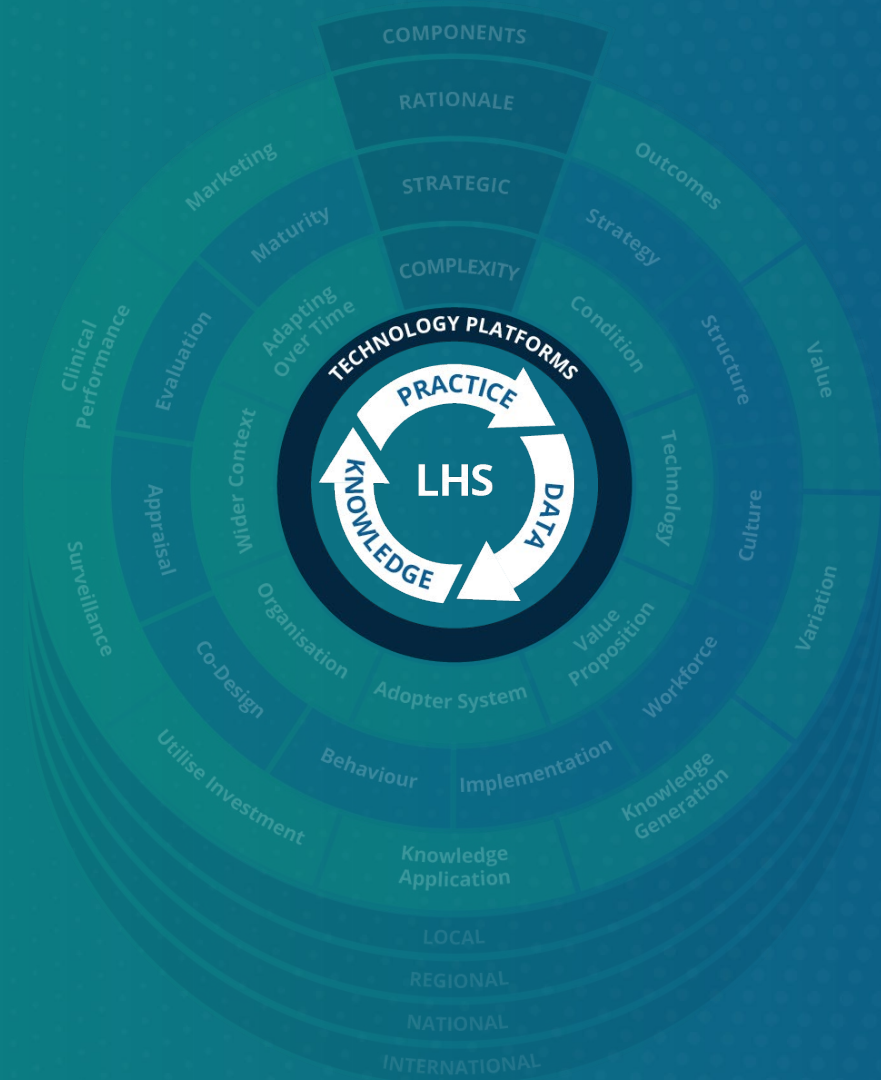
# WHAT STRATEGIC APPROACHES TO CHANGE?



# WHAT COMPLEXITY?

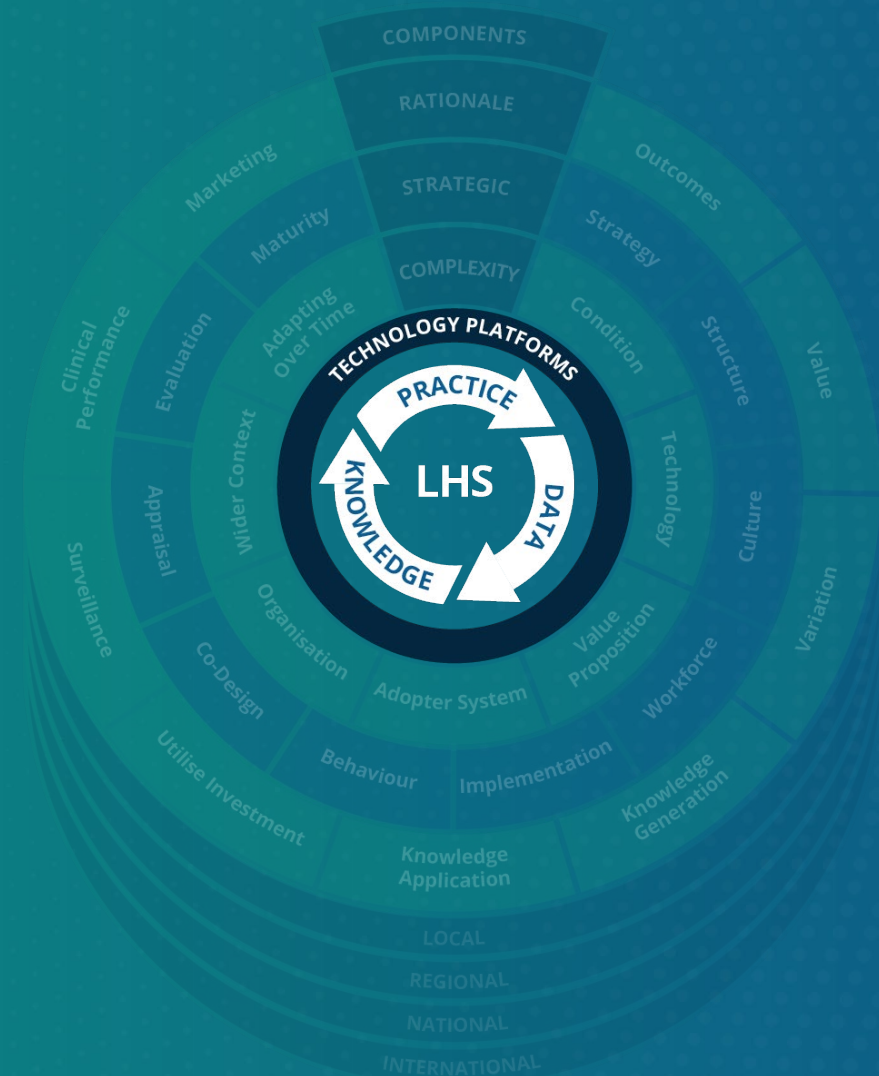


# WHAT TECHNICAL BUILDING BLOCKS?



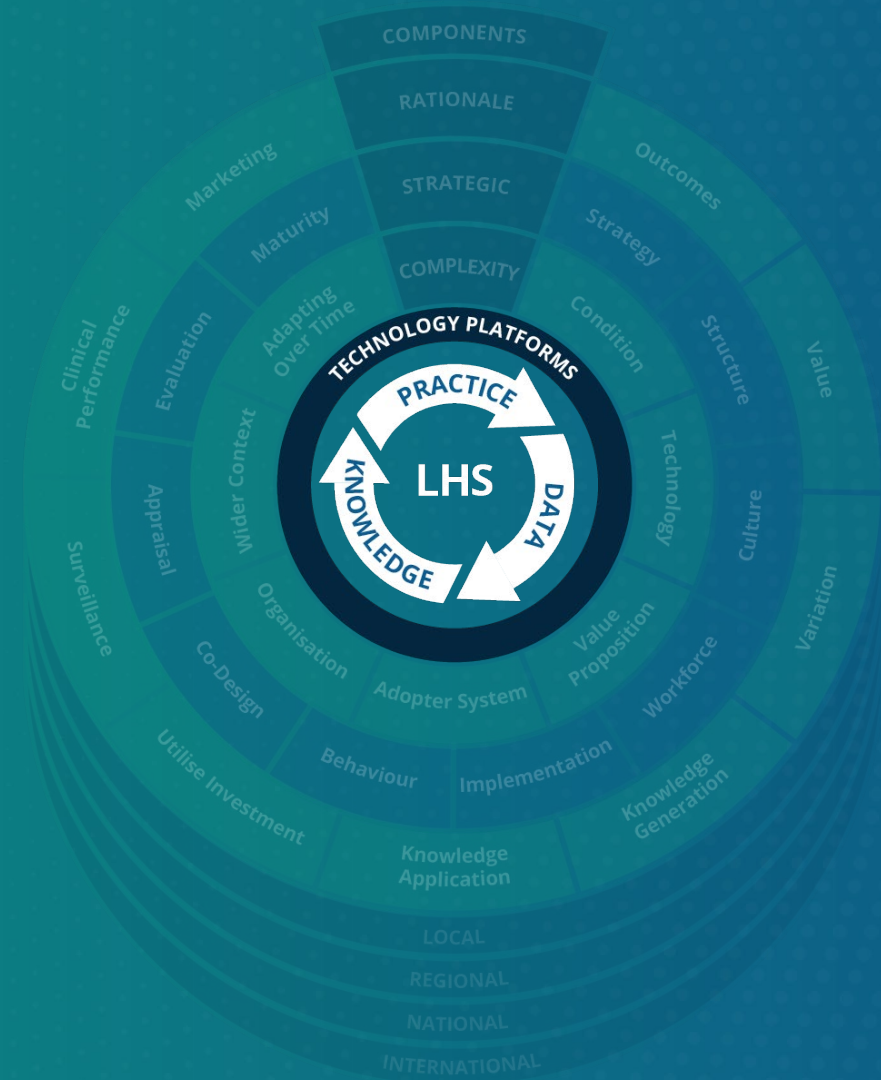
# LEARNING COMMUNITIES

- Co-design terms of reference
- A safe space to reflect
- A positive error culture
- Build trust and skills
- Engender confidence and agency for change
- Provide challenge and reassurance
- Action focused and sustainable



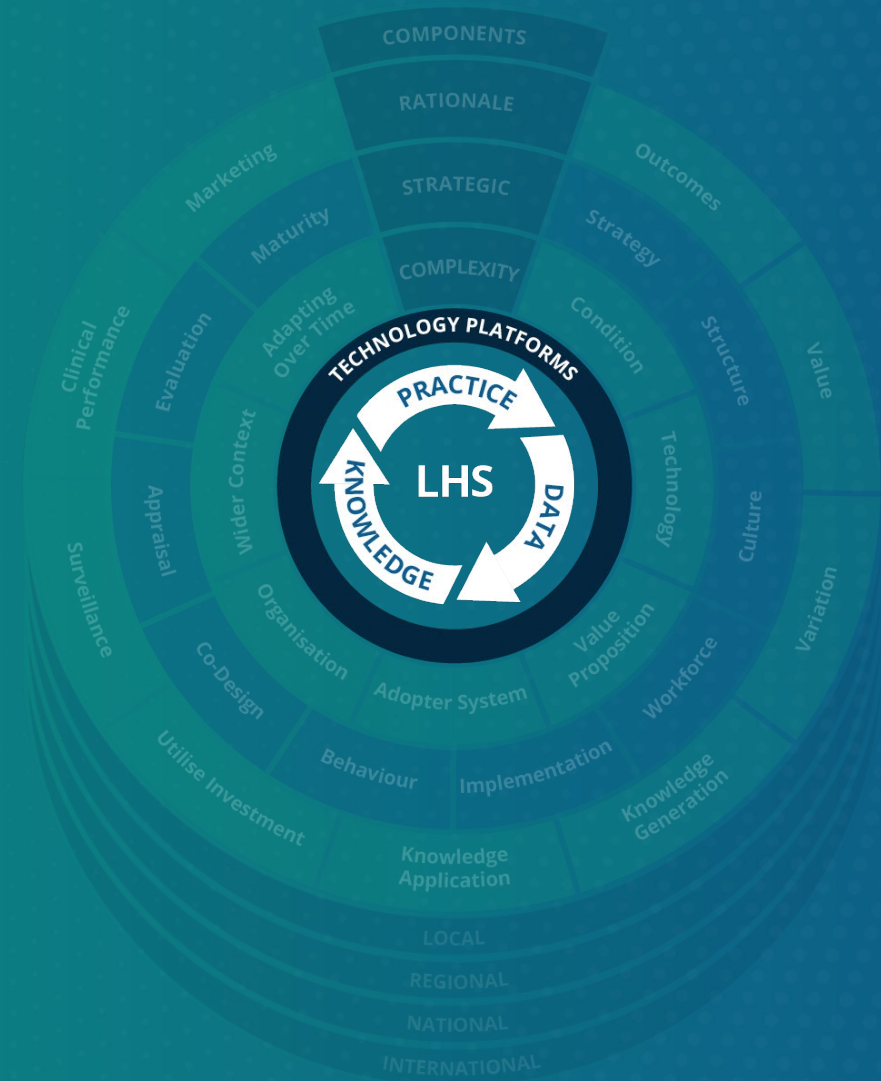
# PRACTICE TO DATA

- Data Capture
- Data Standards
- Data Quality
- Storage & Access
- IG
- Interoperability



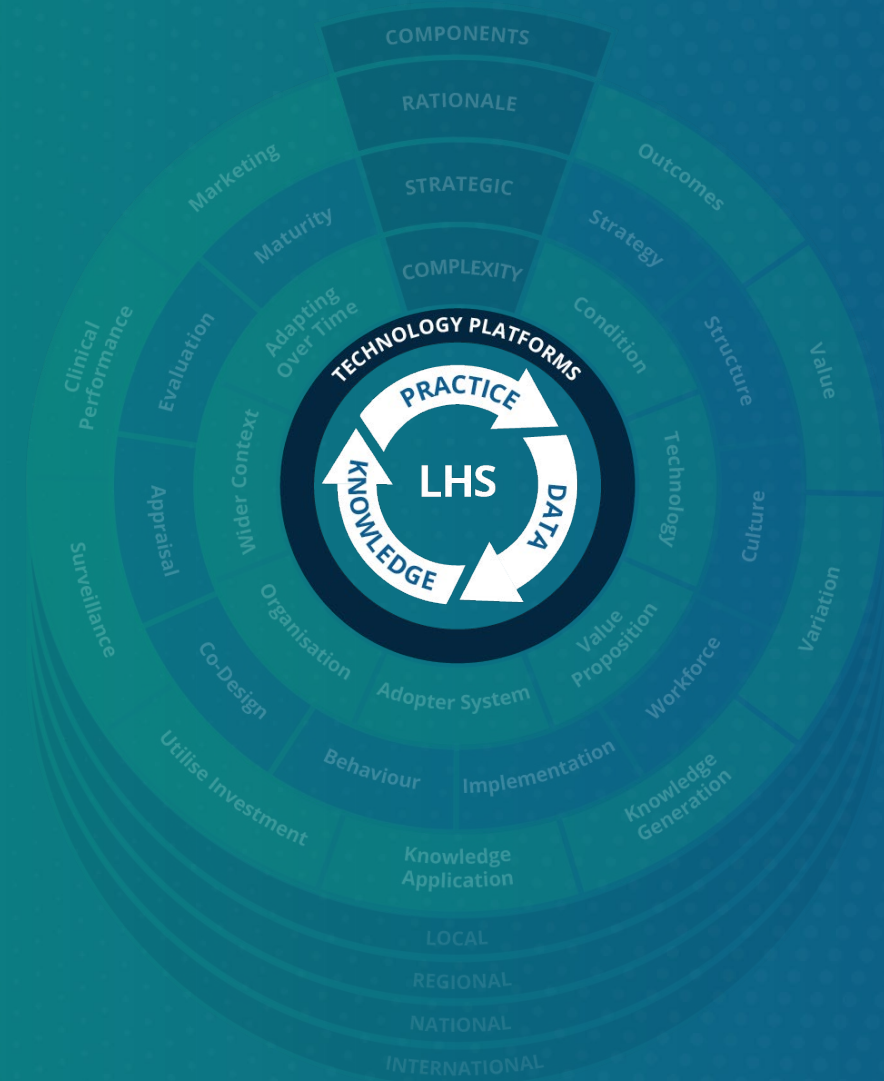
# DATA TO KNOWLEDGE

- Randomisation
- Quasi-experimental
- ML & AI
- Knowledge from Local Experience
- Engineering Approaches
- Qualitative Methods
- Learning Communities



# KNOWLEDGE TO PRACTICE

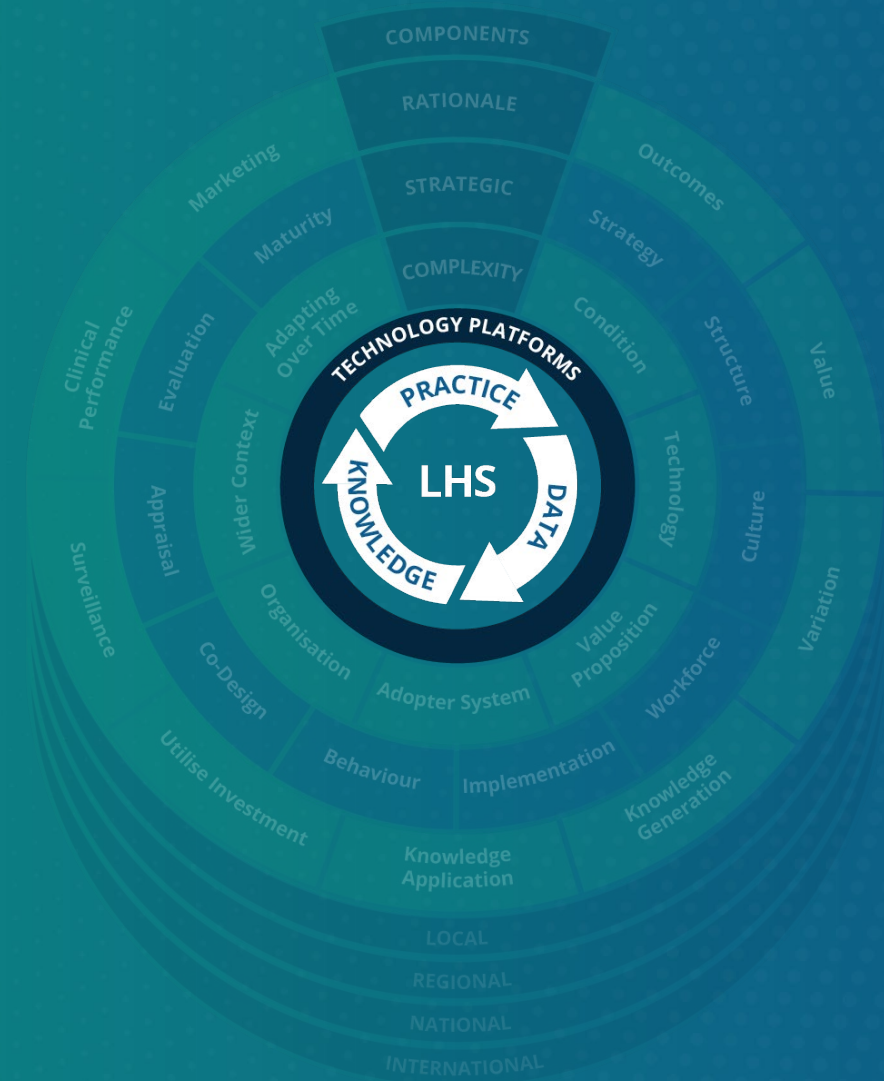
- Representing Knowledge
- Challenges for Knowledge Providers
- Mobilizing Computable Biomedical Knowledge



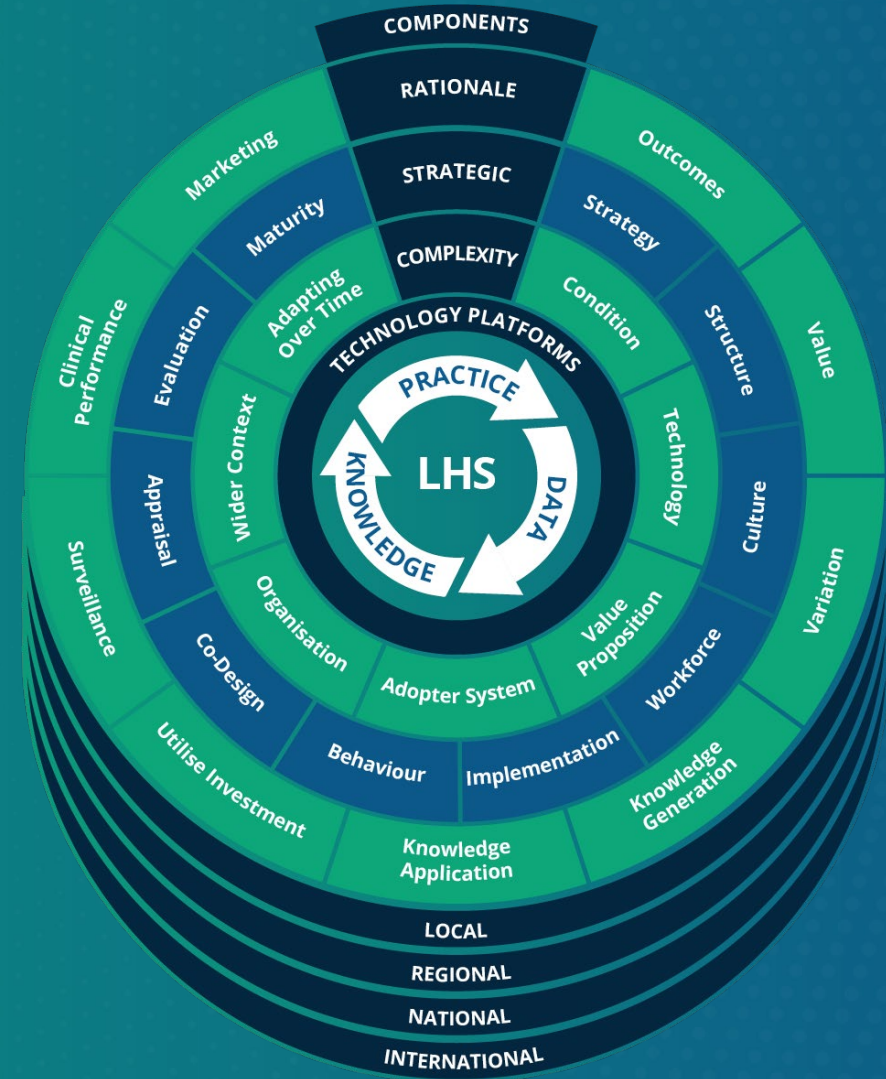


# PLATFORMS

- Digital maturity
- Krankenhauszukunftsgesetz (Hospital Future Act)



# SCALE



# FURTHER INFORMATION

**Website:** [www.learninghealthcareproject.org](http://www.learninghealthcareproject.org)

**Twitter:** @TomJohnFoley

**Email:** thomas.foley@newcastle.ac.uk

